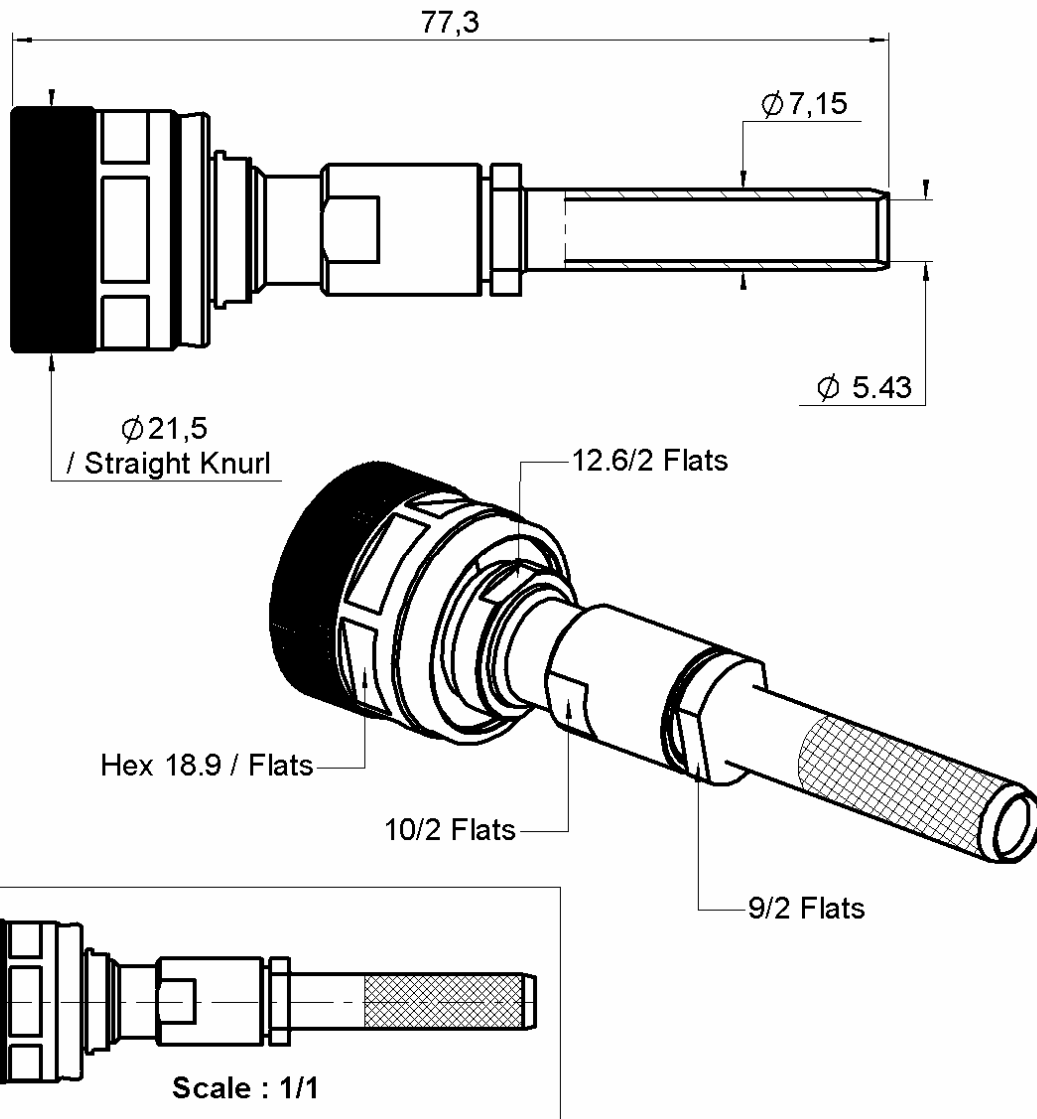


**PC7 PRECISION SEXLESS**

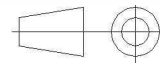
**CABLE MHD 142**

**R151.064.141**

Series : PC7



All dimensions are in mm.



COMPONENTS	MATERIALS	PLATING (µm)
BODY	STAINLESS STEEL	PASSIVATION
CENTER CONTACT	BERYLLIUM COPPER	.GOLD 1.3 OVER NICKEL 2
OUTER CONTACT	-	-
INSULATOR	ULTEM+PTFE	-
GASKET	-	-
OTHERS PARTS	BRASS	GOLD 0.5 OVER NICKEL 2
-	-	-
-	-	-

Issue : 0749 A

In the effort to improve our products, we reserve the right to make changes judged to be necessary.



**PC7 PRECISION SEXLESS**

**CABLE MHD 142**

**R151.064.141**

Series : PC7

**PACKAGING**

Standard	Unit	Other
<b>1</b>	-	<b>Contact us</b>

**SPECIFICATION**

**ELECTRICAL CHARACTERISTICS**

Impedance		<b>50</b> Ω
Frequency		<b>0-18</b> GHz
VSWR	<b>1.14 + 0,0000</b>	x F(GHz) Maxi
Insertion loss		<b>0.1</b> √F(GHz) dB Maxi
RF leakage	- (	<b>NA</b> - F(GHz)) dB Maxi
Voltage rating		<b>350</b> Veff Maxi
Dielectric withstanding voltage		<b>750</b> Veff mini
Insulation resistance		<b>5000</b> MΩ mini

**CABLE ASSEMBLY**

Stripping	a	b	c	d	e	f
mm	5,20	7,90	25,0	0,00	0,00	0,00

Assembly instruction :

Recommended cable(s)  
MHD142

Characteristics indicated on this data sheet are those that can be achieved with the highest performance cable. Intrinsic limitations of the cable may diminish the performance of the assembly

Cable retention

- pull off	<b>300</b> N mini
- torque	<b>NA</b> N.cm

**MECHANICAL CHARACTERISTICS**

Center contact retention		
Axial force – Mating end	<b>300</b>	N mini
Axial force – Opposite end	<b>300</b>	N mini
Torque	<b>NA</b>	N.cm mini

**TOOLING**

Part Number	Description	Hexagon
.	.	.

Recommended torque		
Mating	<b>140</b>	N.cm
Panel nut	<b>NA</b>	N.cm
Clamp nut	<b>170</b>	N.cm
A/F clamp nut	<b>0,0000</b>	mm

Mating life	<b>5000</b>	Cycles mini
Weight	<b>58,5200</b>	g

**OTHER CHARACTERISTICS**

STOCKAGE (STORAGE) -55/+70 degrees C

**ENVIRONMENTAL**

Operating temperature	<b>+13/+33</b>	° C
Hermetic seal	-	Atm.cm3/s
Panel leakage	<b>NA</b>	

Issue : 0749 A

In the effort to improve our products, we reserve the right to make changes judged to be necessary.



**RADIALL**®

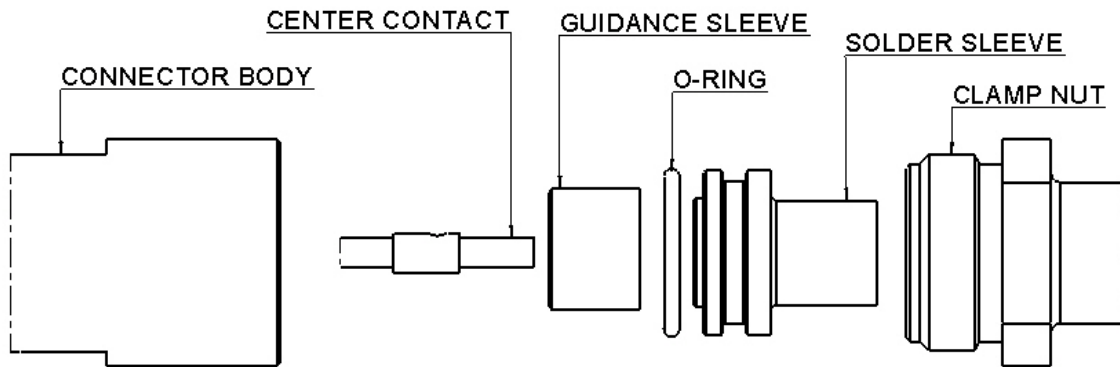
**PC7 PRECISION SEXLESS**

**R151.064.141**

**CABLE MHD 142**

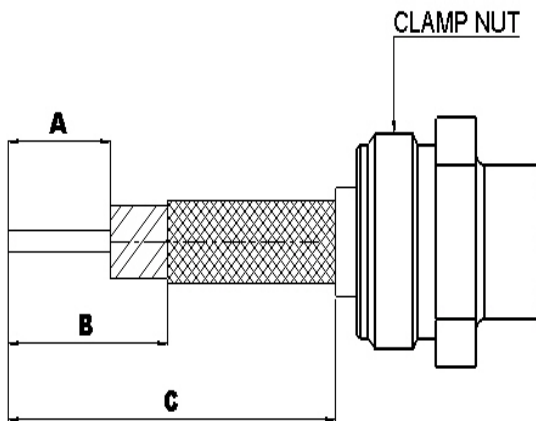
Series : PC7

**COMPONENTS**



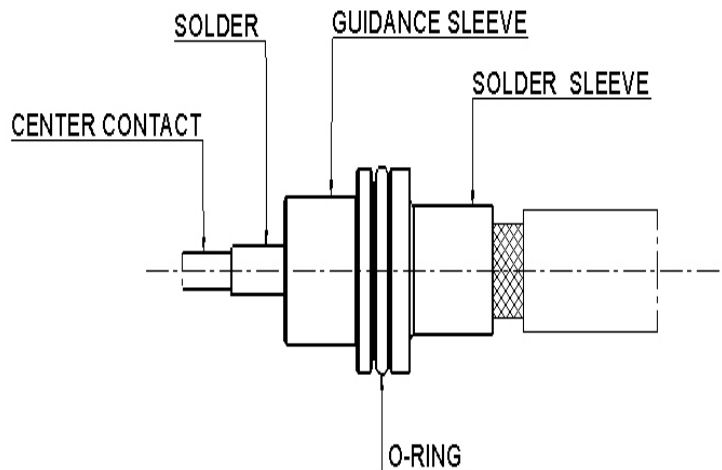
**1**

Strip the cable.  
Slide the clamp nut onto the cable.



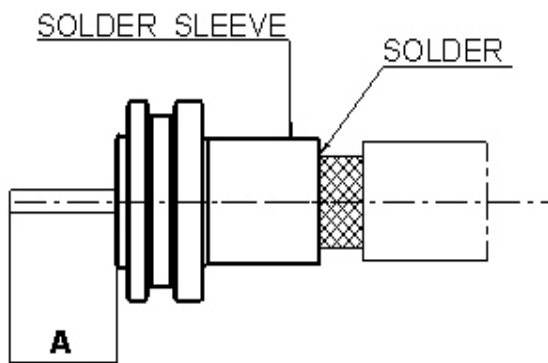
**3**

Mount the O-ring on the Solder sleeve .  
Slide the Guidance Sleeve against the Solder sleeve and the center contact onto the inner conductor .  
Solder the center contact onto the inner conductor.



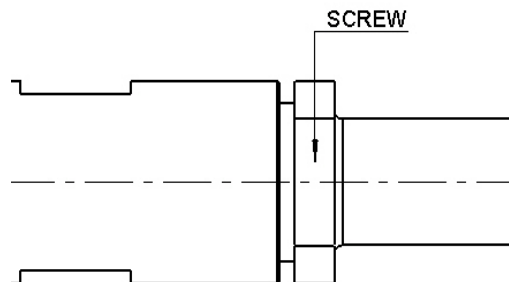
**2**

Slide the Solder sleeve on the cable and solder .



**4**

Mount the whole body into the main sub assembly and screw the Clamp nut.



Issue : 0749 A

In the effort to improve our products, we reserve the right to make changes judged to be necessary.

